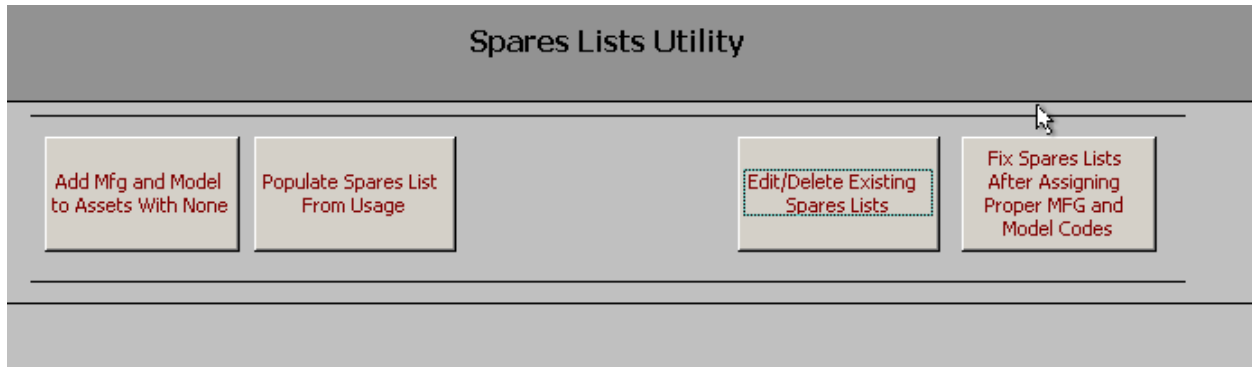


SPARES LIST MANAGEMENT UTILITY

The Spares List Management Utility allows you to fully manage the spares lists in Mainsaver.

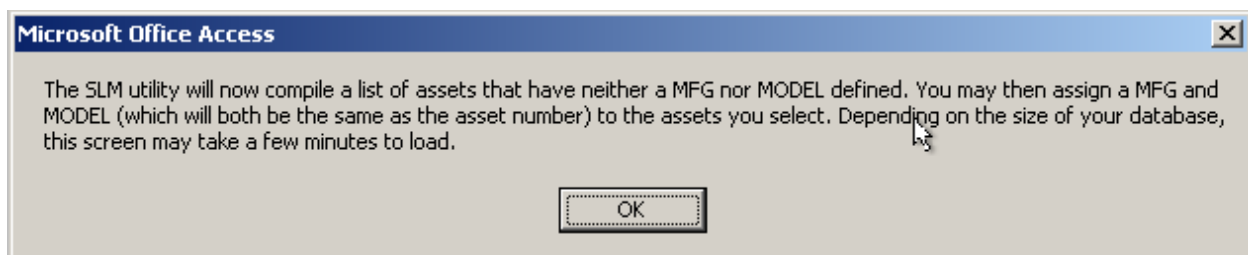
The SLM Utility has 4 basic functions.



1)

In Mainsaver, spares lists are built not against assets themselves but against asset MFG/MODEL combinations, such as FORD / F150 trucks. Often is the case that Mainsaver users don't realize this fact, never add MFG or MODELS to their assets, and therefore never get the opportunity to build spares lists. They may issue parts to assets and even add misc materials usage to assets, but never get a spares list built.

The first button in the SLM, labeled ADD MFG AND MODEL TO ASSETS WITH NONE will compile a list of assets onto the screen that have neither a MFG nor a MODEL defined. Keep in mind that it may take up to 3 minutes for the screen to load depending on the size of your database.



The form titled MANUFACTURERS TO IMPORT TO MAINSAVER will show you all of the assets with neither a MFG nor a MODEL. By checking the IMPORT checkbox to each part, you are telling the SLM to create a new MFG and a new MODEL with the same name as the asset number, and then apply that MFG and MODEL to that asset. In other words, if your asset number is LA386, you will be creating a MFG called LA386 and a model called LA386, and then applying both to asset LA386. Think of this as

a quick and dirty way to get started. Although ideally you would like to use a real MFG and MODEL for your assets, this will at least meet the minimum requirements for you to build a spares list for that asset. Keep in mind, that if you decide to later go into Mainsaver and apply the correct MFG and MODEL to your assets, there is a feature in the SLM to move the spares list to the new MFG / MODEL combo and then erase the unneeded (fictitious) MFG and MODEL you created previously (LA386 in our earlier example). It's very easy to do; you'll just click one button.

Next to each asset, you'll notice a button labeled PERMINANTLY REMOVE FROM LIST. This button will erase that asset from the screen (not from Mainsaver!), excluding it from the utility. It will also prevent that asset from reappearing in the SLM anytime in the future.

The paragraph in red (lower left corner of the screen) explains that if you have more than one assets in the list with the same first 25 characters, the will appear in the small box at the bottom of the screen.. If you see any assets in this list, please go into Mainsaver and manually add MFG and MODEL for those assets.

Once you've selected the assets that will get new MFG/MODELS applied to their records, click on the ADD MFG/MODEL TO CHECKED ITEM INTO MAINSAVER button.

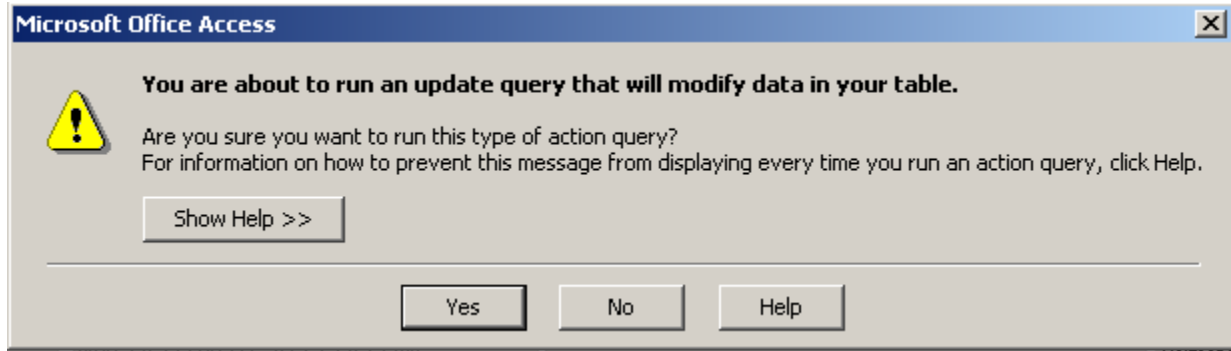
Import	Asset	Description	Long Description	
<input type="checkbox"/>	GO187	Blade Tip Grinder		Permanently remove from list
<input type="checkbox"/>	043272	DRILL SCRAPPED		Permanently remove from list
<input type="checkbox"/>	056017	BUX mag base drill		Permanently remove from list
<input type="checkbox"/>	080014	EXPANDER		Permanently remove from list
<input type="checkbox"/>	115203	GRINDER, BENCH		Permanently remove from list
<input type="checkbox"/>	121802	GRINDER		Permanently remove from list
<input type="checkbox"/>	156409	NOT AN ASSET		Permanently remove from list
<input type="checkbox"/>	209	drill press		Permanently remove from list
<input type="checkbox"/>	220015	PRESS, MOUNTING		Permanently remove from list
<input type="checkbox"/>	342693	WELDER/ CART #CE000899		Permanently remove from list
<input type="checkbox"/>	533731	TAG MACHINE		Permanently remove from list
<input type="checkbox"/>	552388	WASHER,PARTS-KLEERFLOW		Permanently remove from list
<input type="checkbox"/>	565911	CART-TAYLOR DUNN REC# 1720		Permanently remove from list

NOTE: this list shows duplicate assets (same first 25 characters). If any assets appear in this box, please add the MFG / Model to these assets manually.

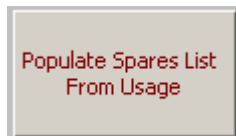
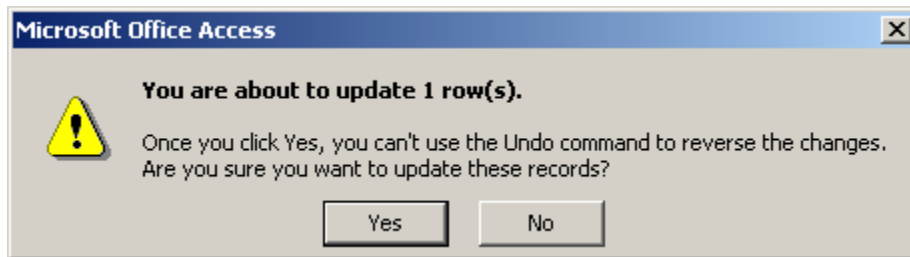
Asset	Dupes
GE-CONTROL ROOM EQUIP 3	

Check All Add MFG/MODEL for checked items Into
 Uncheck All Exit Without Importing

You will be warned that you are making a change to the database. Click YES to continue or NO to cancel.



Upon click YES, it take up to a few minutes to complete.



2)

The SLM can populate your spares lists based on materials usage that has already taken place in the past. As long as you've been issuing parts or applying misc material usage records to assets (or to work orders against assets) you can easily add these parts to the correct spares lists.

When you click on the button labeled POPULATE SPARES LISTS FROM USAGE, you will be presented with 5 input boxes. Three that pertain to issues of Stocked items (stock number, begin date of issue, and end date of issue) and two that pertain to non-stocked/misc materials usage (begin date of issue and end date of issue). These input boxes will allow you to narrow down which usage records will appear on the IMPORT screen.

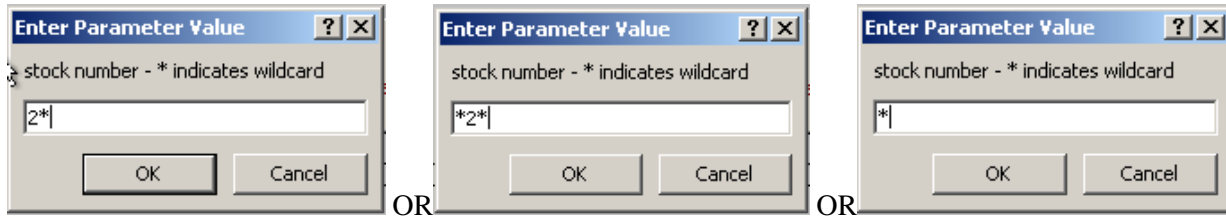
FIRST YOU WILL FIRST BE PROMPTED FOR INFORMATION ABOUT USAGE FROM STOCKED ITEMS

First, you will be able to narrow down the search to only show assets with a specific stock number. The three pictures below are examples of what you could input.

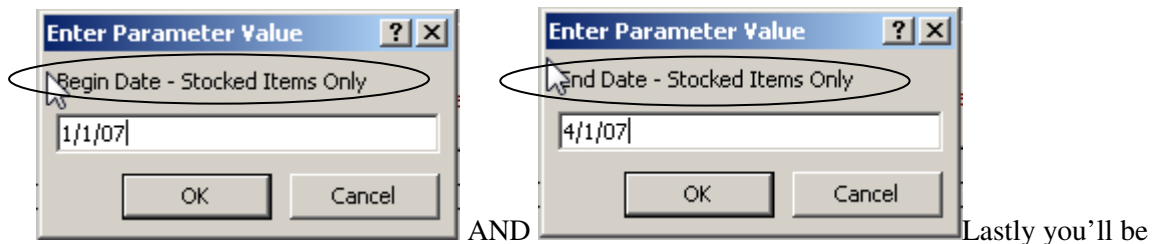
stock numbers beginning with 2

stock numbers with a 2 in them

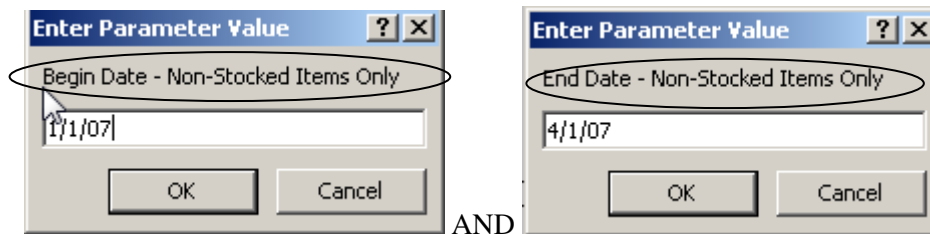
ANY STOCK NUMBER



Next you'll be prompted for a date range which will be compared against the issue date of your materials usage records (**for records that have a stock number**) so that only ones that fall between the begin date and end date will be shown.




Lastly you'll be prompted for a date range which will be compared against the issue date of your materials usage records (**for records that do not have a stock number**) so that only ones that fall between the begin date and end date will be shown.



Once you input the end date for non-stocked items, you will be presented with all of the usage records that met your criteria. Checking on the IMPORT checkbox will tell the SLM to add that part to the spares list for the MFG/MODEL combo listed.

KEEP IN MIND, once you import a part to a spares list, it will not continue to show up for the same spares list in the future if you run the SLM utility again. The SLM will never cause you to accidentally import duplicate records.



Spares To Import To Mainsaver

Double-click on any Stock Number of a Stocked item to see a usage history for that item.
Double-click on any Description of a Non-Stocked item to see a usage history for that item.

	Import	mfg:	modelno:	stockno:	partno:	Qty:	Remove from list
▶	<input type="checkbox"/>	(PCS) PROFILE CUTTI	PCS2000 FINE LINE		DEFINITE PURPOSE CO	1	<input type="checkbox"/>
▶	<input type="checkbox"/>	ABAR IPSEN	HR-50X48		DURO THERMOCOUP	1	<input type="checkbox"/>
▶	<input type="checkbox"/>	ABAR IPSEN	VR-60X60		CHASSIE CABLE	1	<input type="checkbox"/>
▶	<input type="checkbox"/>	ABAR IPSEN	VR-60X60		CONTROL THERMOCO	1	<input type="checkbox"/>
▶	<input type="checkbox"/>	ABAR IPSEN	VR-60X60		EASY READ FLOW	1	<input type="checkbox"/>
▶	<input type="checkbox"/>	ABAR IPSEN	VR-60X60		ELBW	1	<input type="checkbox"/>
▶	<input type="checkbox"/>	ABAR IPSEN	VR-60X60		HI POWER V BELT	1	<input type="checkbox"/>
▶	<input type="checkbox"/>	ABAR IPSEN	VR-60X60		KNUCKLE RELIEFE VAL	1	<input type="checkbox"/>
▶	<input type="checkbox"/>	ABAR IPSEN	VR-60X60		KNUCKLE RELIEFE VAV	1	<input type="checkbox"/>
▶	<input type="checkbox"/>	ABAR IPSEN	VR-60X60		ML CONNECTOR	1	<input type="checkbox"/>
▶	<input type="checkbox"/>	ABAR IPSEN	VR-60X60		ML ELBW	1	<input type="checkbox"/>
▶	<input type="checkbox"/>	ABAR IPSEN	VR-60X60		OUTPUT MODULE	1	<input type="checkbox"/>
▶	<input type="checkbox"/>	ABAR IPSEN	VR-60X60		POWER CABLE	1	<input type="checkbox"/>
▶	<input type="checkbox"/>	ABAR IPSEN	VR-60X60		SVL STR	1	<input type="checkbox"/>

Record: 1 of 212

Check All

Import Checked Items Into Mainsaver

Uncheck All

Exit Without Importing



Spares To Import To Mainsaver

Double-click on any Stock Number of a Stocked item to see a usage history for that item.
Double-click on any Description of a Non-Stocked item to see a usage history for that item.
Double-click on any Model to access the spares list for that MFG/MODEL combo with full editing capability.

Optionally, you may double click on any stock number to launch a usage inquiry on that particular stock number (to see all of the times it has been issued).

spares inquiry - stocked					
stockno	description	wo	usg_date	item_cost	assetno
01597	FARR 30/30 BOX FILTER	P514803	4/14/2003	5.4	HVAC
01597	FARR 30/30 BOX FILTER	P515169	4/29/2003	5.4	HVAC
01597	FARR 30/30 BOX FILTER	P515525	6/11/2003	5.4	HVAC
01597	FARR 30/30 BOX FILTER	P515525	6/11/2003	5.4	HVAC
01597	FARR 30/30 BOX FILTER	P515857	7/22/2003	5.4	HVAC
01597	FARR 30/30 BOX FILTER	P516196	8/22/2003	5.4	HVAC
01597	FARR 30/30 BOX FILTER	P516561	9/24/2003	5.4	HVAC
01597	FARR 30/30 BOX FILTER	P516561	9/24/2003	5.4	HVAC
01597	FARR 30/30 BOX FILTER	P517625	1/13/2004	5.15	CEMS CABINET
01597	FARR 30/30 BOX FILTER	P517872	2/3/2004	5.15	HVAC
01597	FARR 30/30 BOX FILTER	P518280	3/8/2004	5.15	HVAC
01597	FARR 30/30 BOX FILTER 20" X 25" X 1"	P519390	7/13/2004	5.15	HVAC
01597	FARR 30/30 BOX FILTER 20" X 25" X 1"	C109205	7/14/2004	5.15	HVAC
01597	FARR 30/30 BOX FILTER 20" X 25" X 1"	P519782	8/16/2004	5.15	HVAC

Record: 1 of 28 | No Filter | Search

Optionally, you may double click on any **description** to launch a usage inquiry on that particular stock number (to see all of the times it has been issued).

spares inquiry - non-stocked					
stockno	description	wo	usg_date	item_cost	assetno
	ML ELBW	P161106	3/30/2007	3.48	V-8
	ML ELBW	P161106	3/30/2007	2.34	V-8

Record: 1 of 2

You may also double-click on any MODEL to launch a screen showing you the spares list for that particular MFG/MODEL combo. This screen will have full editing capability. You may edit the part number or the quantity needed. You may also add or delete parts from the spares list.

Spares Lists Management

mfg:

modelo:

	partno	stockno	qty_needed
▶	JJ15S1AFP	S-000044	0
	ULTRAGRIP		1
*			

If you decide to remove an item from the screen, click on the far right checkbox labeled REMOVE FROM LIST. This will not only remove it from the list but prevent that part from ever reappearing in the SLM.

Spares To Import To Mainsaver

Double-click on any Stock Number of a Stocked item to see a usage history for that item.

Double-click on any Description of a Non-Stocked item to see a usage history for that item.

	Import	mfg:	modelo:	stockno:	partno:	Qty:	Remove from list
	<input type="checkbox"/>	(PCS) PROFILE CUTTING	PCS2000 FINE LINE		DEFINITE PURPOSE CO	1	<input checked="" type="checkbox"/>
	<input type="checkbox"/>	ABAR IPSEN	HR-50X48		DURO THERMOCOUPLE	1	<input type="checkbox"/>
	<input type="checkbox"/>	ABAR IPSEN	VR-60X60		CHASSIE CABLE	1	<input checked="" type="checkbox"/>
	<input type="checkbox"/>	ABAR IPSEN	VR-60X60		CONTROL THERMOCO	1	<input type="checkbox"/>
	<input type="checkbox"/>	ABAR IPSEN	VR-60X60		EASY READ FLOW	1	<input checked="" type="checkbox"/>
	<input type="checkbox"/>	ABAR IPSEN	VR-60X60		ELBW	1	<input type="checkbox"/>
	<input type="checkbox"/>	ABAR IPSEN	VR-60X60		HI POWER V BELT	1	<input type="checkbox"/>
	<input type="checkbox"/>	ABAR IPSEN	VR-60X60		KNUCKLE RELIEFE VAL	1	<input type="checkbox"/>
	<input type="checkbox"/>	ABAR IPSEN	VR-60X60		KNUCKLE RELIEFE VAL	1	<input type="checkbox"/>
	<input type="checkbox"/>	ABAR IPSEN	VR-60X60		ML CONNECTOR	1	<input type="checkbox"/>
	<input type="checkbox"/>	ABAR IPSEN	VR-60X60		ML ELBW	1	<input type="checkbox"/>
	<input type="checkbox"/>	ABAR IPSEN	VR-60X60		OUTPUT MODULE	1	<input type="checkbox"/>
	<input type="checkbox"/>	ABAR IPSEN	VR-60X60		POWER CABLE	1	<input type="checkbox"/>
	<input type="checkbox"/>	ABAR IPSEN	VR-60X60		SVL STR	1	<input type="checkbox"/>

Record: 5 of 212

Check All

Import Checked Items Into Mainsaver

Uncheck All

Exit Without Importing

Prior to importing the list of parts, you may wish to see which assets belong to a specific MFG/MODEL combo (to see which asset will be affected when you import a part to a spares list). Simply click on the + symbol next to any item to see a list of assets that belong to the selected MFG/MODEL. You may also modify the MFG and/or MODEL for an asset at this time.

Spares To Import To Mainsaver

Double-click on any Stock Number of a Stocked item to see a usage history for that item.
 Double-click on any Description of a Non-Stocked item to see a usage history for that item.

	Import	mfg:	modelno:	stockno:	partno:	Qty:	Remove from list
+	<input type="checkbox"/>	(PCS) PROFILE CUTTING	PCS2000 FINE LINE		DEFINITE PURPOSE CO	1	<input type="checkbox"/>
+	<input type="checkbox"/>	ABAR IPSEN	HR-50X48		DURO THERMOCOUPLE	1	<input type="checkbox"/>
+	<input type="checkbox"/>	ABAR IPSEN	VR-60X60		CHASSIE CABLE	1	<input type="checkbox"/>
		assetno		mfg	model		
		V-8	ABAR IPSEN	VR-60X60			
		V-10	ABAR IPSEN	VR-60X60			
		V-9	ABAR IPSEN	VR-60X60			
		*					
+	<input type="checkbox"/>	ABAR IPSEN	VR-60X60		CONTROL THERMOCO	1	<input type="checkbox"/>
+	<input type="checkbox"/>	ABAR IPSEN	VR-60X60		EASY READ FLOW	1	<input checked="" type="checkbox"/>
+	<input type="checkbox"/>	ABAR IPSEN	VR-60X60		ELBW	1	<input type="checkbox"/>
+	<input type="checkbox"/>	ABAR IPSEN	VR-60X60		HI POWER V BELT	1	<input type="checkbox"/>
+	<input type="checkbox"/>	ABAR IPSEN	VR-60X60		KNUCKLE RELIEFE VAL	1	<input type="checkbox"/>
+	<input type="checkbox"/>	ABAR IPSEN	VR-60X60		KNUCKLE RELIEFE VAL	1	<input type="checkbox"/>

Record: 5 of 212

Spares To Import To Mainsaver

Double-click on any Stock Number of a Stocked item to see a usage history for that item.
 Double-click on any Description of a Non-Stocked item to see a usage history for that item.

	Import	mfg:	modelno:	stockno:	partno:	Qty:	Remove from list
+	<input type="checkbox"/>	CAE ULTRASONIC	AQ-4-5030		needle cam follower	1	<input type="checkbox"/>
+	<input type="checkbox"/>	CATERPILLAR	DP150		STUD	1	<input type="checkbox"/>
+	<input type="checkbox"/>	CATERPILLAR	GP-25		BATTERY	1	<input type="checkbox"/>
+	<input type="checkbox"/>	CATERPILLAR	GP-25		STARTER	1	<input type="checkbox"/>
+	<input type="checkbox"/>	CATERPILLAR	PC400		LP TANK	1	<input type="checkbox"/>
+	<input type="checkbox"/>	CATERPILLAR	PC400		cooling fan	1	<input type="checkbox"/>
+	<input type="checkbox"/>	CATERPILLAR	PC400		filter oil	1	<input type="checkbox"/>
+	<input type="checkbox"/>	CEMCO	H-70HM80		filters	1	<input type="checkbox"/>
+	<input type="checkbox"/>	CINCINNATI FAN	SPB-9		SOLENOID VALVE	1	<input type="checkbox"/>
		assetno		mfg	model		
		CD-001	CINCINNATI FAN	SPB-9			
		*	ABAR IPSEN				
+	<input type="checkbox"/>	CINCINNATI MILACRON	ARDOX		a/c input board	1	<input type="checkbox"/>
+	<input type="checkbox"/>	CINCINNATI MILACRON	BLANCHARD		i.o bus adapter	1	<input type="checkbox"/>

Record: 1 of 1

Spares To Import To Mainsaver

Double-click on any Stock Number of a Stocked item to see a usage history for that item.
Double-click on any Description of a Non-Stocked item to see a usage history for that item.

	Import	mfg:	modelno:	stockno:	partno:	Qty:	Remove from list
+	<input type="checkbox"/>	CAE ULTRASONIC	AQ-4-5030		needle cam follower	1	<input type="checkbox"/>
+	<input type="checkbox"/>	CATERPILLAR	DP150		STUD	1	<input type="checkbox"/>
+	<input type="checkbox"/>	CATERPILLAR	GP-25		BATTERY	1	<input type="checkbox"/>
+	<input type="checkbox"/>	CATERPILLAR	GP-25		STARTER	1	<input type="checkbox"/>
+	<input type="checkbox"/>	CATERPILLAR	PC400		LP TANK	1	<input type="checkbox"/>
+	<input type="checkbox"/>	CATERPILLAR	PC400		cooling fan	1	<input type="checkbox"/>
+	<input type="checkbox"/>	CATERPILLAR	PC400		filter oil	1	<input type="checkbox"/>
+	<input type="checkbox"/>	CEMCO	H-70HM80		filters	1	<input type="checkbox"/>
+	<input type="checkbox"/>	CINCINNATI FAN	SPB-9		SOLENOID VALVE	1	<input type="checkbox"/>
		assetno	mfg				
	<input type="checkbox"/>	CD-001	ABAR IPSEN		SPB-9		
	<input checked="" type="checkbox"/>				VR-60X60		
+	<input type="checkbox"/>	CINCINNATI MILACRON	C		a/c input board	1	<input type="checkbox"/>
+	<input type="checkbox"/>	CINCINNATI MILACRON	C		i.o bus adapter	1	<input type="checkbox"/>

Record: 1 of 1

Once you have selected the items you wish to assign to spares lists, click on the **IMPORT CHECKED ITEMS INTO MAINSAVER** button.

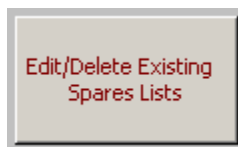
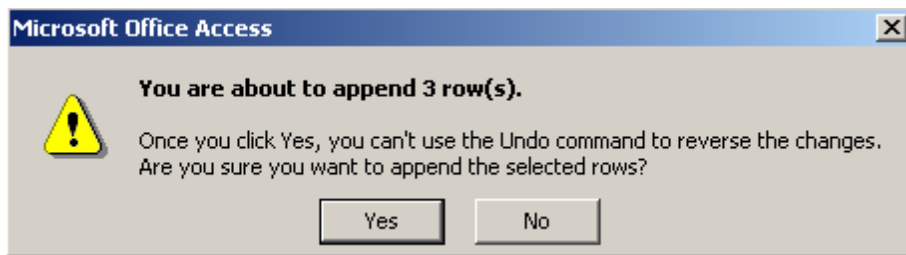
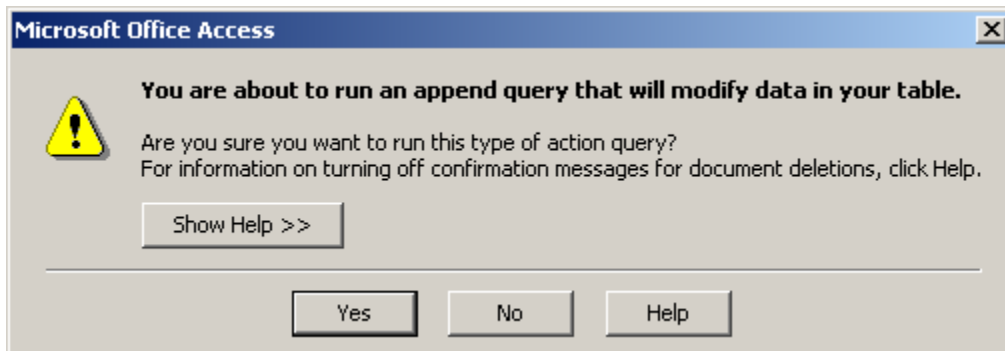
Spares To Import To Mainsaver

Double-click on any Stock Number of a Stocked item to see a usage history for that item.
Double-click on any Description of a Non-Stocked item to see a usage history for that item.

	Import	mfg:	modelno:	stockno:	partno:	Qty:	Remove from list
+	<input checked="" type="checkbox"/>	ABAR IPSEN	VR-60X60		EASY READ FLOW	1	<input type="checkbox"/>
+	<input type="checkbox"/>	ABAR IPSEN	VR-60X60		ELBW	1	<input type="checkbox"/>
+	<input checked="" type="checkbox"/>	ABAR IPSEN	VR-60X60		HI POWER V BELT	1	<input type="checkbox"/>
+	<input checked="" type="checkbox"/>	ABAR IPSEN	VR-60X60		KNUCKLE RELIEFE VALVE	1	<input type="checkbox"/>
+	<input type="checkbox"/>	ABAR IPSEN	VR-60X60		KNUCKLE RELIEFE VAVE	1	<input checked="" type="checkbox"/>
+	<input type="checkbox"/>	ABAR IPSEN	VR-60X60		ML CONNECTOR	1	<input type="checkbox"/>
+	<input type="checkbox"/>	ABAR IPSEN	VR-60X60		ML ELBW	1	<input type="checkbox"/>
+	<input type="checkbox"/>	ABAR IPSEN	VR-60X60		OUTPUT MODULE	1	<input type="checkbox"/>
+	<input type="checkbox"/>	ABAR IPSEN	VR-60X60		POWER CABLE	1	<input type="checkbox"/>
+	<input type="checkbox"/>	ABAR IPSEN	VR-60X60		SVL STR	1	<input type="checkbox"/>
+	<input type="checkbox"/>	ABAR IPSEN	VR-60X60		SWWL STR	1	<input type="checkbox"/>
+	<input type="checkbox"/>	ABAR IPSEN	VR-60X60		adapter	1	<input type="checkbox"/>
+	<input type="checkbox"/>	ABAR IPSEN	VR-60X60		c ring	1	<input checked="" type="checkbox"/>
+	<input type="checkbox"/>	ABAR IPSEN	VR-60X60		c ring assy	1	<input checked="" type="checkbox"/>

Record: 18 of 212

You will be warned that records will be imported into Mainsaver. Click YES to continue or NO to cancel.



- 3) You may wish to simply edit spares lists that exist in Mainsaver. Click on the third button labeled EDIT/DELETE EXISTING SPARES LISTS.

A screen will launch showing you the first spares list in Mainsaver (alphabetically by MFG/MODEL combo). You may add items, delete items, or edit items in this screen. To delete a part from the spares list, click on the record selector (small square box) just to the left of the part. This will highlight the entire line. Next, click the delete key on your keyboard to delete that part.



Spares Lists Management

mfg: ABAR IPSEN

modelno: VR-60X60

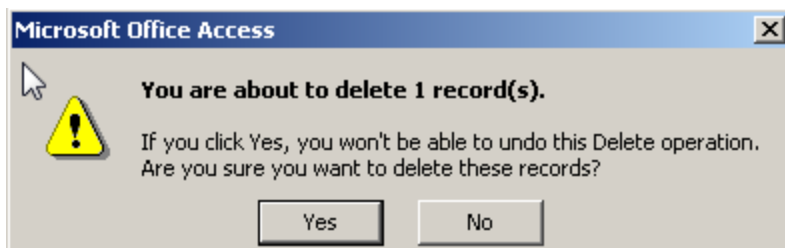
Switch to
DATASHEET view (no
delete capability)

	partno	stockno	qty_needed
	EASY READ FLOW		1
▶	HI POWER V BELT		1
	KNUCKLE RELIEFE VALVE		1
	UJ15S1AFP - MODEL XYZ	S-000044	6
	ULTRAGRIP		1
*			

NOTE: To delete a part from a spares list, click on the square grey record selector to the left of a part (to highlight that record) and then click the DELETE key on your keyboard.

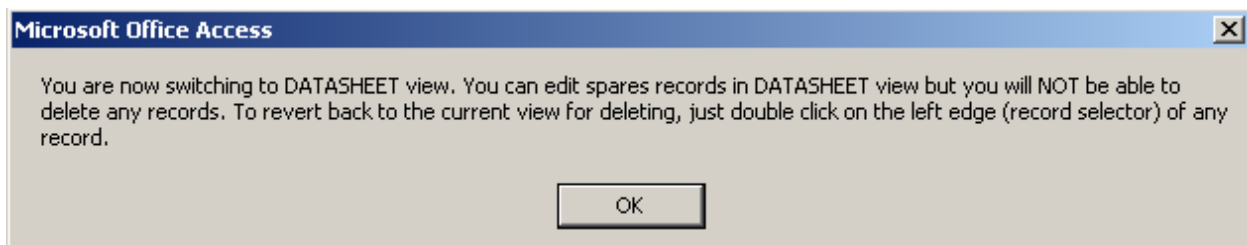


After clicking the DELETE key on your keyboard, you'll be warned that you'll be erasing a record. Click YES to continue or NO to cancel.



If you would like to see all spares lists, click on the button labeled SWITCH TO DATASHEET VIEW (NO DELETE CAPABILITY)

Switch to
DATASHEET view (no
delete capability)




Next, you'll be presented with all spares lists. Click on the + to open a spares lists and reveal the parts. You will have full edit capability but will not be able to delete a part in this particular view.

mfg:		modelno:	
▶	+ ABAR IPSEN	VR-60X60	
	+ ARDOX	3503A-6	
	- BLANCHARD	2CHD-48	
		partno	stockno
		27060	S-000019
		38E216-1864	S-000018
		*	
	+ BLOHM	310DK	
	+ BLOHM	ISS800DK	
	+ CATERPILLAR	T50D	
	+ CURDWORTH	FCG	
	+ DAYTON	1Z853	
	+ EDGETEK	EMC5AX	
	+ GIDDINGS & LEWIS	511	
	+ GIDDINGS & LEWIS	512	
	+ GIDDINGS & LEWIS	512-800	
	+ GIDDINGS & LEWIS	514	
	+ GIDDINGS & LEWIS	MC60	
	+ GLEASON	120	
	+ GLEASON	19/120	
	+ GLEASON	887	
	+ GLEASON	888	
	+ GLEASON	888CNC	
	+ GLEASON	J29-C	

To revert back to form view (which has delete capability) simply double click on a record selector for the spares list you wish to work on.





Spares Lists Management


mfg:

modelno:

Switch to DATASHEET
 view (no delete
 capability)

	partno	stockno	qty_needed
▶	27060	S-000019	0
	38E216-1864	S-000018	0
*			

NOTE: To delete a part from a spares list, click on the square grey record selector to the left of a part (to highlight that record) and then click the DELETE key on your keyboard.



The last feature of the SLM has to do with cleaning up orphaned spares lists.

Let's suppose you've used the SLM to apply fictitious MFG and MODEL to your assets as explained above (both having the same name as the asset number). Below is a picture of the spares tab on an asset record to illustrate. The asset no, MFG, and MODEL are all WS499.

Asset - KwikEdit [WS499 - WELDER-SPOT TACK-WS499]

Spares

Manufacturer: Model No:

	Stock Number	Part No	Description	Qty Needed	Total OH
→		VALVE XYZ	hydraulic valve	1.0000	

Add
Delete
Locations
Ext Desc

OK
Cancel

Next, you've decided to apply the correct (real) MFG and MODEL to your asset (CONRAC/210RH is the example below). Notice that the spares list has disappeared. The parts are still inked to MFG/MODEL = WS499/WS499.

Asset - KwikEdit - [WS499 - WELDER-SPOT TACK-WS499]

Asset Detail Financial PM Reliability **Spares** User Defined References Usage

Manufacturer: CONRAC Model No: 210RH

Stock Number	Part No	Description	Qty Needed	Total OH
			.0000	

Add Delete Locations Ext Desc OK Cancel

The last (4th) button in the SLM will correct this.



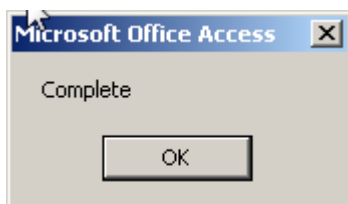
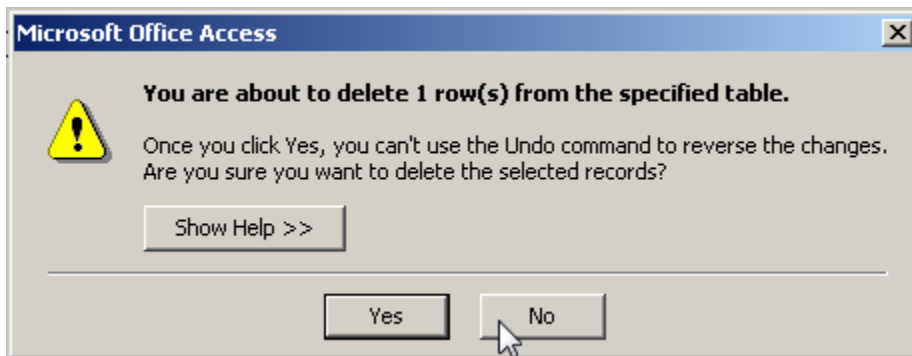
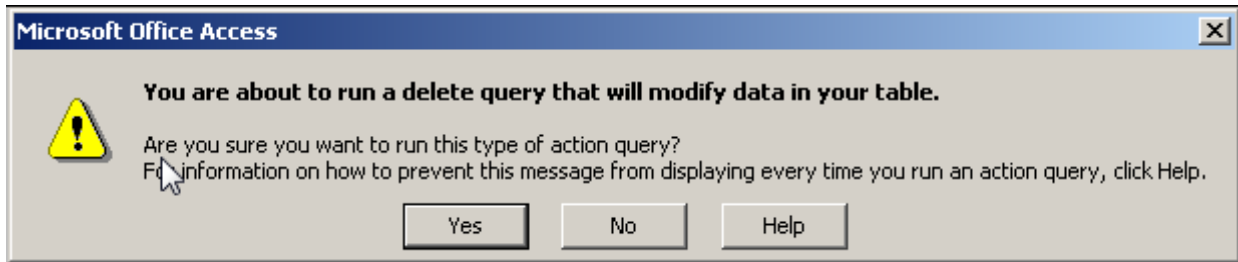
4)

Click on the button labeled FIX SPARES LISTS AFTER ASSIGNING PROPER MFG AND MODEL CODES. This feature will move the spares list to the new MFG / MODEL combo and then erase the unneeded (fictitious) MFG and MODEL you created previously (WS499 in this case)

Microsoft Office Access

This utility will fix spares lists for those assets that previously had their MFG and MODEL the same as their asset number but now have a different (correct) MFG and MODEL defined. You are about to transfer spares records to their proper MFG and MODEL.

OK



Notice that the spares list for or asset has been restored (the parts have moved from WS499/WS499 to CONRAC/210RH

Asset - KwikEdit - [WS499 - WELDER-SPOT TACK-WS499]

Asset Detail Financial PM Reliability **Spares** User Defined References Usage

Manufacturer: CONRAC Model No: 210RH

Stock Number	Part No	Description	Qty Needed	Total OH
→	VALVE XYZ	hydraulic valve	.0000	
			.0000	

Add Delete Locations Ext Desc OK Cancel